

Section 5 supporting information

5.1 REFERENCES

1. Hammer MP and Walker KF (2004) A catalogue of South Australian freshwater fishes including new records, range extensions and translocations. *Transactions of the Royal Society of South Australia* **128**, 85-97.
2. Berra TM (2001) 'Freshwater fish distribution.' (Academic Press: Sydney)
3. Avise JC (2004) 'Molecular Markers, Natural History and Evolution.' 2nd Edn. (Sinauer Associates: Sunderland)
4. Ricciardi A and Rasmussen JB (1999) Extinction rates of North American freshwater fauna. *Conservation Biology* **13**, 1220-1222.
5. Bruton MN (1995) Have fishes had their chips? The dilemma of threatened fishes. *Environmental Biology of Fishes* **43**, 1-27.
6. IUCN (2006) 'IUCN Red List of Threatened Species.' (International Union for Conservation of Nature and Natural Resources: www.iucnredlist.org accessed on 13/6/06)
7. Moyle PB (1995) Conservation of native freshwater fishes in the Mediterranean-type climate of California, USA: a review. *Biological Conservation* **72**, 271-279.
8. Barlow CG, Hogan AE and Rodgers LJ (1987) Implications of translocated fishes in the apparent extinction in the wild of the Lake Eacham Rainbowfish, *Melanotaenia eachamensis*. *Australian Journal of Marine and Freshwater Research* **38**, 897-902.
9. Jackson J (1999) Threatened Fish Profile: Pedder Galaxias *Galaxias pedderensis*. *Australian Society for Fish Biology Newsletter* **29**, 31-32.
10. Crook DA and Sanger AC (1997) Recovery Plan for the Pedder, Swan, Clarence, swamp and saddled galaxias. Inland Fisheries Commission, Hobart.
11. Brown A, Nicol S and Koehn J (1998) Recovery plan for the trout cod *Maccullochella macquariensis*. Aquatic Ecosse Pty Ltd and Department of Natural Resources and Environment, Melbourne. p. 31.
12. Wager R and Jackson P (1993) 'The Action Plan for Australian Freshwater Fishes.' (Australian Nature Conservation Agency: Canberra)
13. Hammer M (2001) Molecular systematics and conservation biology of the southern pygmy perch *Nannoperca australis* (Günther, 1861) (Teleostei: Percichthyidae) in south-eastern Australia. B. Sc.(Honours) thesis, Adelaide University.
14. Bertozzi T, Adams M and Walker KF (2000) Species boundaries in carp gudgeons (Eleotrididae: *Hypseleotris*) from the River Murray, South Australia: evidence for multiple species and extensive hybridization. *Marine and Freshwater Research* **51**, 805-815.
15. Raadik T (2001) When is a mountain galaxias not a mountain galaxias? *Fishes of Sahul* **15**, 785-789.
16. Hammer MP, Adams M, Unmack PJ and Walker KF (2007) A rethink on *Retropinna*: conservation implications of new taxa and significant genetic substructure in Australian smelts (Pisces: Retropinnidae). *Marine and Freshwater Research* **58**, 327-341.
17. Blewett CF (1929) Habits of some Australian freshwater fishes. *South Australian Naturalist* **10**, 21-29.
18. Nettlebeck N (1926) Fishes of the Finniss River. *South Australian Naturalist* **7**, 64-65.
19. Smith BB and Walker KF (2004) Reproduction of common carp in South Australia, shown by young-of-the-year samples, gonadosomatic index and the histological staging of ovaries. *Transactions of the Royal Society of South Australia* **128**, 249-257.

20. Smith BB and Walker KF (2004) Spawning dynamics of common carp in the River Murray, South Australia, shown by macroscopic and histological staging of gonads. *Journal of Fish Biology* **64**, 336-354.
21. Hammer M (2004) Recovery progress for the southern pygmy perch in the Mount Lofty Ranges: 2001-2003. Report to the River Murray Catchment Water Management Board. Native Fish Australia (SA) Inc., Adelaide. p. 23.
22. Hammer M (2002) Recovery outline for the southern pygmy perch in the Mount Lofty Ranges, South Australia. Department of Environmental Biology, University of Adelaide and Native Fish Australia (SA) Inc., Adelaide. p. 32.
23. Hammer M (2002) The South East fish inventory: distribution and conservation of freshwater fishes of south east South Australia. Native Fish Australia (SA) Inc., Adelaide. p. 53.
24. Wedderburn S and Hammer M (2003) The Lower Lakes Fish Inventory: distribution and conservation of freshwater fishes of the Ramsar Convention wetland at the terminus of the Murray-Darling Basin, South Australia. Native Fish Australia (SA) Inc., Adelaide. p. 38.
25. Hammer M (2004) Eastern Mount Lofty Fish Inventory: distribution and conservation of freshwater fishes of tributaries to the Lower River Murray, South Australia. Native Fish Australia (SA) Inc & River Murray Catchment Water Management Board, Adelaide. p. 104.
26. NFA(SA) (in prep.) Kangaroo Island Fish Inventory. Native Fish Australia (SA) Inc., Adelaide.
27. Hammer M (2006) Report on stage one of the Southern Fleurieu fish inventory. Report to Department of Water Land and Biodiversity Conservation. Native Fish Australia Inc. and Aquasave, Adelaide. p. 44.
28. Hammer M (2005) Adelaide Hills Fish Inventory: distribution and conservation of freshwater fishes in the Torrens and Patawalonga catchments, South Australia. Report to Torrens and Patawalonga Catchment Water Management boards. Native Fish Australia (SA) Inc., Adelaide. p. 68.
29. Glover CJM (1990) Fishes. In 'Natural History of the North East Deserts'. (Eds MJ Tyler, CR Twidale, M Davies and CB Wells.) pp. 189-197. (Royal Society of South Australia Inc.: Adelaide)
30. Glover CJM (1989) Fishes. In 'Natural History of Dalhousie Springs'. (Eds W Zeidler and WF Ponder.) pp. 94-96. (South Australian Museum: Adelaide)
31. Wager R and Unmack PJ (2000) 'Fishes of the Lake Eyre Catchment of Central Australia.' (The State of Queensland, Department of Primary Industries and Queensland Fisheries Service: Brisbane)
32. Pierce BE, Young M and Sim T (2001) Flinders Ranges Fishes. In 'A Biological Survey of the Flinders Ranges, South Australia 1997-1999'. (Ed. R Brandle.) pp. 25-33. (Department for Environment and Heritage, South Australia: Adelaide)
33. Ehmann H and Tynan R (1997) 'Wildlife management manual: the Gawler Ranges and Kingoonya soil conservation districts.' (Department of Environment and Heritage: Adelaide)
34. Glover CJM (1987) Threatened fish species in South Australia. In 'Proceedings of the Conference on Australian Threatened Fishes'. Sydney. (Ed. JH Harris) pp. 55-58. (Division of Fisheries, Department of Agriculture New South Wales.)
35. Lloyd LN and Walker KF (1986) Distribution and conservation status of small freshwater fish in the River Murray, South Australia. *Transactions of the Royal Society of South Australia* 100, 49-57.
36. Pierce B (1997) "Fair go" for endangered eight. *Southern Fisheries* 5, 12-13.
37. Baker JL (in press) Status of marine species at risk in South Australia: Technical Report - bony and cartilaginous fish. Electronic book, web pages and CD prepared for the South Australian Working Group for Marine Species of Conservation Concern. South Australian Department for Environment and Heritage, Marine and Coastal Community Network of SA, and Threatened Species Network, Adelaide.

38. Department for Environment and Heritage (2003) 2003 review of the status of threatened species in South Australia. Proposed Schedules under the South Australian National Parks and Wildlife Act 1972: Discussion paper. National Parks and Wildlife Council in partnership with the Department for Environment and Heritage, Adelaide. p. 61.
39. Lloyd LN (1987) Ecology and distribution of the small native fish of the lower River Murray, South Australia and their interactions with the exotic mosquitofish, *Gambusia affinis holbrooki*. M. Sc. thesis, University of Adelaide.
40. Atkins BP, Lloyd LN and Grey JD (1988) Fish. In 'Wetlands of the Bakers Range and Marcollat watercourses'. (Ed. B Atkins.) pp. 89-95. (Department of Environment and Planning: Adelaide)
41. Rutherford BA (1991) 'The South Australian Aquarium Society. 1918-1932, The First Fifteen years. An Official History.' (Brian A. Rutherford: Modbury Heights, South Australia)
42. Hale HM (1928) Aquarists in camp. *South Australian Naturalist* **9**, 25-26.
43. Glover CJM and Olsen AM (1985) Fish and major fisheries. In 'Natural History of Eyre Peninsula'. (Eds MJ Tyler, CR Twidale and M Davies.) pp. 169-181. (Royal Society of South Australia (SA) Inc.: Adelaide)
44. Scott TD, Glover CJM and Southcott RV (1974) 'The Marine and Freshwater Fishes of South Australia.' 2nd Edn. (Government Printer: Adelaide)
45. Glover CJM (1979) Fishes. In 'Natural History of Kangaroo Island'. (Eds CR Twidale and JK Ling.) pp. 139-153. (Royal Society of South Australia: Adelaide)
46. Glover CJM (1980) Fishes. In 'A Field Guide to the Flinders Ranges'. (Ed. DWP Corbett.) pp. 217-223. (Rigby: Adelaide)
47. Glover CJM (1983) Freshwater and Marine Fishes. In 'Natural History of the South East'. (Eds M Tyler, CR Twidale, JK Ling and JW Holmes.) pp. 157-167. (Royal Society of South Australia: Adelaide)
48. Kuitert RH (1983) Fish in focus: Mount Gambier fishes. *Scuba Diver* **1983**, 36-41.
49. Kodric-Brown A and Brown JH (1993) Highly structured fish communities in Australian desert springs. *Ecology* **74**, 1847-1855.
50. Hammer M, Wedderburn S and Westergaard S (2002) Freshwater fishes. In 'A Biological Survey of the Murray Mouth Reserves, South Australia'. (Ed. R Brandle.) pp. 54-61. (Department for Environment and Heritage: Adelaide)
51. Hammer M (2005) Recovery monitoring for the southern pygmy perch in the Mount Lofty Ranges South Australia, 2001-2005 review. *Native Fish Australia (SA) Inc.*, Adelaide. p. 53.
52. Hammer M, Ristic T and Slater S (2005) Freshwater Fish Survey of Baldina Creek with preliminary observations on other watercourses in the eastern North Mount Lofty Ranges, South Australia. Report to the Friends of Burra Parks Inc. *Native Fish Australia (SA) Inc.*, Adelaide. p. 8.
53. Rowntree J and Hammer M (2004) Freshwater fish survey of the central urban River Torrens, Adelaide South Australia. Report to the Adelaide City Council. *Native Fish Australia (SA) Inc.*, Adelaide. p. 15.
54. Hammer M, Ristic T and Crawford M (2004) Freshwater Fish Survey of the Bungala River Catchment, Fleurieu Peninsula South Australia. *Native Fish Australia (SA) Inc.*, Adelaide. p. 12.
55. Hammer M (unpublished) 2002-2007 misc. research data for South Australia.
56. Hammer M and Wedderburn S (2004) Freshwater fish survey of Morgan's Lagoon, River Murray South Australia. *Native Fish Australia (SA) Inc.*, Adelaide. p. 12.
57. Hammer M, Skinner N and Playford T (2004) Observations on the 'Mechanical Dragging' of Eight Mile Creek, South-east South Australia. *Aquasave: Report to the South Eastern Water Conservation and Drainage Board.* p. 11.

58. Bice C and Ye Q (2006) Monitoring threatened fish communities on Hindmarsh Island, in the Lower Lakes of the River Murray, South Australia in 2005. SARDI Publication RD06/0004-1. SARDI (Aquatic Sciences), Adelaide. p. 40.
59. Higham J, Ye Q and Smith B (2005) Murray-Darling Basin drought monitoring: monitoring small bodied fish in the lower Murray during and after drought conditions in 2003-2004. SARDI Aquatic Sciences publication No. RD04/0154, Adelaide. p. 40.
60. Hicks D (1997) The impact of acid mine drainage on fish distribution in the southeast Mt Lofty Ranges, South Australia. B.Sc. (Honours) thesis, University of Adelaide.
61. Wedderburn S (2000) Habitat and conservation status of small fish in the Lower River Murray, and a comparison of the western carp gudgeon (*Hypseleotris klunzingeri*) and gambusia (*Gambusia holbrooki*) as larval mosquito predators. B.Sc. (Honours) thesis, University of Adelaide.
62. Wedderburn SD (2008) Population fragmentation in the Murray Hardyhead *Craterocephalus fluviatilis* McCulloch, 1912 (Teleostei: Atherinidae): ecology, genetics and osmoregulation. The University of Adelaide.
63. Wedderburn SD, Walker KF and Zampatti BP (2007) Habitat separation of *Craterocephalus* (Atherinidae) species and populations in off-channel areas of the lower River Murray, Australia. *Ecology of Freshwater Fish* **16**, 442–449.
64. Costello JF, Hudson P, Pritchard JC, Puckridge JT and Reid JRW (2003) ARIDFLO - environmental flow requirements of arid zone rivers. Final report to Environment Australia, Canberra. Department for Water Land and Biodiversity Conservation, Adelaide. p. 123.
65. Hicks D and Sheldon F (1998) Biotic survey of the Wakefield River, for the Mid North Riverine Management Planning Project. Report to the South Australian Department for Environment, Heritage and Aboriginal Affairs. Department of Zoology, University of Adelaide, South Australia. p. 64.
66. Hicks D and Sheldon F (1999) Biotic survey of the Broughton River, for the Mid North Riverine Management Planning Project. Report to the South Australian Department for Environment, Heritage and Aboriginal Affairs. Department of Zoology, University of Adelaide, South Australia. p. 71.
67. Hicks D and Sheldon F (1999) Biotic survey of the Gawler River. Report to the South Australian Department for Environment, Heritage and Aboriginal Affairs. University of Adelaide, Adelaide. p. 90.
68. Hicks D and Sheldon F (1999) Biotic survey of the Light River, for the Mid North Riverine Management Planning Project. Report to the South Australian Department for Environment, Heritage and Aboriginal Affairs. Department of Zoology, University of Adelaide, South Australia. p. 68.
69. Holt M, Swingler K, O'Donnell E, Shirley M, Lake M, Conallin A, Meredith S, Ho S, Prider J, Poulsen D, Richardson S and Cooling M (2004) River Murray Wetlands Baseline Survey. Volume 1 data report. report to River Murray Catchment Water Management Board. Sinclair Knight Merz, Malvern. p. 1032.
70. Smith BB (2006) Final report on the 'fish' component of the 2005 River Murray Wetlands Baseline Survey. Primary Industries and Resources SA, SARDI Aquatic Sciences., Adelaide. p. 83.
71. McEvoy P, Howell S and Hicks DC (2005) Mt Lofty Ranges water resources assessment program: macroinvertebrate and fish survey and analysis below water supply reservoirs. Report to Department of Water, Land and Biodiversity Conservation. Australian Water Quality Centre, Bolivar.
72. Hicks DC and McEvoy P (2005) Biological and stream condition survey of the eastern urban Torrens from Gorge Weir to Gilberton. Report to the Torrens Catchment Water Management Board. Australian Water Quality Centre, Bolivar.

73. Gray S, Howell S and Maxwell S (2005) Ecological Survey of the Torrens River Wetlands at Breakout Creek and within the Horse Agistment Area: Integrated report to the Torrens Catchment Water Management Board. Australian Water Quality Centre, Bolivar. p. 32.
74. Morris SA, Pollard DA, Gehrke PC and Pogonoski JJ (2001) Threatened and potentially threatened freshwater fishes of coastal New South Wales and the Murray Darling Basin. NSW Fisheries, Sydney. p. 166.
75. McDowall RM and Frankenberg RS (1981) The galaxiid fishes of Australia. Records of the Australian Museum **33**, 443-605.
76. McDowall RM and Fulton W (1996) Family Galaxiidae: galaxiids. In 'Freshwater Fishes of South eastern Australia'. 2nd Edn. (Ed. RM McDowall.) pp. 52-77. (Reed Books: Chatswood NSW)
77. McNeil DG (2004) Ecophysiology and behaviour of Ovens River floodplain fish: hypoxia tolerance and the role of the physicochemical environment in structuring Australian billabong fish communities. PhD thesis, LaTrobe University.
78. Smith BB (2006) Interim report on the 'fish' and 'water quality' components of the 2006 River Murray Wetlands Baseline Survey. Primary Industries and Resources SA, SARDI Aquatic Sciences, Adelaide. p. 25.
79. Tucker P (2004) Your wetland: monitoring manual - data collection. River Murray Catchment Water Management Board and Australian Landscape trust, Berri. p. 196.
80. Berra TM and Weatherley AH (1972) A systematic study of the Australian freshwater Serranid fish genus *Maccullochella*. Copeia **1**, 53-64.
81. Cadwallader PL and Gooley GJ (1984) Past and present distributions and translocations of Murray cod *Maccullochella peeli* and trout cod *M. macquariensis* (Pisces : Percichthyidae) in Victoria. Proceedings of the Royal Society of Victoria **96**, 33-43.
82. Dunstan WJ (1892) Murray fish and thier habits. In 'The Regsiter'. pp. 6-9. Adelaide
83. Pierce B (1990) Chowilla Fisheries Investigation, Project Completion Report. Murray-Darling Basin Commission, Canberra. p. 154.
84. Cadwallader PL (1977) Fisheries and wildlife paper, Victoria number 13: J. O. Langtry's 1949-50 Murray River investigations. Ministry for Conservation, Fisheries and Wildlife Division, East Melbourne. p. 70.
85. Lintermans M and Osborne W (2002) 'Wet and Wild: A Field Guide to the Freshwater Animals of the Southern Tablelands and High Country of the ACT and NSW.' (Environment ACT: Canberra)
86. Grown I, Wooden I and Schiller C (2004) Use of instream wood habitat by trout cod *Maccullochella macquariensis* (Cuvier) in the Murrumbidgee River. Pacific Conservation Biology **10**, 261-265.
87. Koehn JD and O'Connor WG (1990) 'Biological Information for the Management of Native Freshwater Fish in Victoria.' (Department of Conservation and Environment: Melbourne)
88. Harris JH and Rowland SJ (1996) Family Percichthyidae: cods and basses. In 'Freshwater Fishes of South-eastern Australia'. (Ed. RM McDowall.) pp. 150-163. (Reed Books: Chatswood NSW)
89. Lintermans M (2007) 'Fishes of the Murray-Darling Basin: an Introductory Guide.' (Murray-Darling Basin Commission: Canberra)
90. Berra TM (1974) The Trout Cod, *Maccullochella macquariensis*, a rare freshwater fish of eastern Australia. Biological Conservation **6**, 53-56.
91. Trout Cod Recovery Team (2008) National Recovery Plan for the Trout Cod *Maccullochella macquariensis*. Department of Sustainability and Environment, Melbourne. p. 17.
92. Cadwallader PL (1981) Past and present distributions and translocations of Macquarie perch, *Macquaria australasica* (Pisces: Percichthyidae) with particular reference to Victoria. Proceedings of the Royal Society of Victoria **93**, 23-30.

93. Lintermans M (2000) The status of fish in the Australian Capital Territory: a review of current knowledge and management requirements. Environment ACT, Canberra. p. 108.
94. Hammer M (2009) Status assessment for nationally listed freshwater fishes of south east South Australia during extreme drought, spring 2008. Report to Department for Environment and Heritage, South Australian Government. Aquasave Consultants, Adelaide. p. 39.
95. Fulton W (1986) The Tasmanian mudfish *Galaxias cleaveri* Scott. Fishes of Sahul 4, 150-151.
96. Koehn JD and O'Connor WG (1990) Distribution of freshwater fish in the Otway region South western Victoria Australia. Proceedings of the Royal Society of Victoria 102, 29-40.
97. Koehn JD and Raadik TA (1991) The Tasmanian mudfish, *Galaxias cleaveri* Scott, 1934, in Victoria. Proceedings of the Royal Society of Victoria **103**, 77-86.
98. McDowall RM (1990) 'New Zealand Freshwater Fishes: A Natural History and Guide.' Revised Edn. (Heinemann Reid: Auckland)
99. Andrews AP (1991) Observations on the Tasmanian mudfish, *Galaxias cleaveri* (Pisces: Galaxiidae). Papers and Proceedings of the Royal Society of Tasmania 125, 55-59.
100. Crowley LELM and Ivantsoff W (1990) A review of species previously identified as *Craterocephalus eyresii* (Pisces: Atherinidae). Proceedings of the Linnean Society of New South Wales **112**, 87-103.
101. SAMA (Accessed 2002-2009) Specimen records and holdings of the South Australian Museum. South Australian Museum, Adelaide.
102. Wedderburn S and Barnes T (2009) Condition monitoring of threatened fish species at Lake Alexandrina and Lake Albert (2008-2009). Report to the Murray-Darling Basin Authority and the South Australian Murray-Darling Basin Natural Resources Management Board. The University of Adelaide, Adelaide. p. 42.
103. Wedderburn SD, Walker KF and Zampatti BP (2008) Salinity may cause fragmentation of hardyhead (Teleostei: Atherinidae) populations in the River Murray, Australia. Marine and Freshwater Research **59**, 254-258.
104. Ellis I (2005) Ecology and breeding seasonality of the Murray hardyhead *Craterocephalus fluviatilis* (McCulloch), family Atherinidae, in two lakes near Mildura, Victoria. Report prepared for the Mallee Catchment Management Authority. Murray-Darling Freshwater Research Centre Lower Basin Laboratory, Mildura. p. 59.
105. Lyon J, Ryan T, Papas P, Tonkinson D, O'Brien T and Lennie R (2002) Aquatic fauna of the Woorinen Lakes: survey and recommendations for management. Department of Natural Resources and Environment, Victoria. p. 64.
106. Hammer M and Butler G (2001) Data sheet: freshwater fishes of the Mount Lofty Ranges, part B, Murray Drainages. Upper River Torrens Landcare Group Inc, Mount Pleasant, South Australia. p. 10.
107. Glover CJM and Inglis WG (1971) Freshwater Fish of South Australia. In 'Extract from South Australian Year Book, 1971'. pp. 27-34. (SA Government: Adelaide)
108. Doyle S (2005) Personal Communication on sampling on the Lower River Murray between Mannum and Tailem Bend during the 1960's and 1970's.
109. Moffat D and Voller J (2002) 'Fish and Fish Habitat of the Queensland Murray-Darling Basin.' (Department of Primary Industries, Queensland)
110. McNeil D, Wilson P, Hartwell D and Pellizzari M (2008) Olive perchlet (*Ambassis agassizii*) in the Lachlan River: population status and sustainability in the Lake Brewster region. Report to the Lachlan Catchment Management Authority. SARDI Publication F2008/00846-1. SARDI Aquatic Sciences, West Beach, Adelaide. p. 69.
111. Llewellyn LC (2008) Observations on the breeding biology of *Ambassis agassizii* Steindachner, 1867 (Teleostei: Ambassidae) from the Murray Darling Basin in New South Wales. Australian Zoologist **34**, 476-498.

112. Hammer M (2005) Conservation biology of a small and restricted population of Yarra pygmy perch at Henry Creek, South Australia: causes of a rapid decline. Native Fish Australia (SA) Inc., Adelaide. p. 22.
113. Hammer M (2007) Distribution, status and urgent conservation measures for Yarra Pygmy Perch in the Murray-Darling Basin. Report to Department for Environment and Heritage, South Australian Government. Aquasave Consultants, Adelaide. p. 29.
114. Hammer M (2008) Status review of wild and captive Yarra pygmy perch in the Murray Darling Basin. Report to Department for Environment and Heritage, South Australian Government. Aquasave Consultants, Adelaide. p. 27.
115. Bice CM, Wilson P and Ye Q (2008) Threatened fish populations in the Lower Lakes of the River Murray in spring 2007 and summer 2008. Report to the South Australian Murray-Darling Basin Natural Resources Management Board. SARDI Aquatic Sciences, West Beach. p. 31.
116. Sanger AC (1978) Aspects of the ecology and evolution of the pigmy perches (Teleostei: Kuhlidae). B. Sc. (Honours) thesis, University of Melbourne.
117. Woodward GMA and Malone BS (2002) Patterns of abundance and habitat use by *Nannoperca obscura* (Yarra pygmy perch) and *Nannoperca australis* (southern pygmy perch). Proceedings of the Royal Society of Victoria **114**, 61-72.
118. Hammer M (2007) Survey of nationally threatened fish species in the Mosquito Creek Catchment, South Eastern Australia. Report to Department for Environment and Heritage, South Australian Government. Aquasave Consultants, Adelaide. p. 61.
119. Hammer M (2007) Henry Creek fish research 2006-2007 with a focus on the status of Yarra pygmy perch. Report to Department for Environment and Heritage, South East Region (SA). Aquasave Consultants, Adelaide. p. 10.
120. Slater S and Hammer M (2009) Drought Response Plan for nationally listed freshwater fishes of south east South Australia: regional action, contingency and long term recovery. Department for Environment and Heritage, South East region, Mount Gambier. p. 58.
121. Hammer M (2001) Data sheet: Freshwater Fishes of South Eastern South Australia. Native Fish Australia (SA) Inc, Adelaide. p. 8.
122. Kuitert RH and Allen GR (1986) A synopsis of the Australian pygmy perches (Percichthyidae) with the description of a new species. Revue Francaise Aquariologie **12**, 109-116.
123. Kuitert RH, Humphries P and Arthington AH (1996) Pygmy perches: Family Nannopercidae. In 'Freshwater Fishes of South-Eastern Australia'. 2nd Edn. (Ed. RM McDowall.) pp. 168-175. (Reed Books: Chatswood NSW)
124. Hammer M, Doube J and Roberts M (2000) Conservation of the variegated pygmy perch: freshwater fish survey of lower south eastern South Australia. Report to National Parks and Wildlife SA and the South Eastern Water Conservation and Drainage Board.
125. Hammer M (2007) Conservation of the variegated pygmy perch: 2006 freshwater fish research in lower south eastern South Australia. Report to Department for Environment and Heritage, South Australian Government. Aquasave Consultants, Adelaide. p. 27.
126. Stadter F and Yan W (2000) Assessment of the potential use of groundwater resources in the area south of Mount Gambier. Department for Water Resources, Mount Gambier. p. 191.
127. Carmody G (2006) Save Ewens Ponds! ANGFA Victoria Inc., Melbourne. p. 8.
128. Brown K, Harrington G and Lawson J (2006) Review of groundwater resource condition and management principles for the Tertiary Limestone Aquifer in the South East of South Australia. Department of Water, Land and Biodiversity Conservation, Mount Gambier. p. 92.
129. Hammer M (2007) Report on urgent conservation measures and monitoring of southern purple-spotted gudgeon on the River Murray, South Australia. Report to the South Australian Murray-Darling Basin Natural Resources Management Board. Aquasave Consultants, Adelaide. p. 15.

130. Hammer M (2008) A molecular genetic appraisal of biodiversity and conservation units in freshwater fishes from southern Australia. PhD thesis, University of Adelaide.
131. Hammer M (2008) Aquatic survey of the Murray Bridge Army Range wetlands, South Australia. Aquasave Consultants, Adelaide. p. 12.
132. Larson HK and Hoese DF (1996) Family Gobiidae, subfamilies Eleotridinae and Butinae: gudgeons. In 'Freshwater Fishes of South-eastern Australia'. 2nd Edn. (Ed. RM McDowall.) pp. 200-219. (Reed Books: Chatswood NSW)
133. Llewellyn L (2006) Breeding and development of the endangered Purple-spotted Gudgeon *Mogurnda adspersa* population from the Murray Darling. Australian Zoologist **33**, 480-510.
134. Schiller CB and Harris JH (2001) Native and alien fish. In 'Rivers as Ecological Systems: the Murray-Darling Basin'. pp. 229-258. (Murray Darling Basin Commission: Canberra)
135. DWLBC (2009) Surface water archive. <http://e-nrims.dwlbc.sa.gov.au/swa>, accessed June, 2009. Department of Water Land and Biodiversity Conservation, Adelaide.
136. Allen GR and Jenkins AP (1999) A review of the Australian freshwater gudgeon, genus *Mogurnda* (Eleotridae) with descriptions of three new species. Aqua **3**, 141-156.
137. McKay KM (1985) An assessment of an inland population of purple spotted gudgeons: *Mogurnda* "balcanoensis" (previously recorded as *M. mogurnda*) at Balcanoona Creek/ Gammon Ranges National Park, Northern Flinders Ranges of South Australia. Wildlife Conservation Fund Research Grant Project Report. South Australian Department of Environment and Planning, Adelaide.
138. Pierce B (1996) Ozone layer hole causing fish cancer. In 'Southern Fisheries'. pp. 16.
139. Bywater JF, Banaczowski R and Bailey M (1991) Sensitivity to Uranium of six species of tropical freshwater fishes and four species of Cladocerans from northern Australia. Environmental Toxicology and Chemistry **10**, 1449-1458.
140. Pierce BE (1992) Why chase fish in the desert? South Australia's inland water stock assessment program. In 'SAFISH'. pp. 4-9.
141. Hammer M (2006) Range extensions for four estuarine gobies (Pisces: Gobiidae) in southern Australia: historically overlooked native taxa or recent arrivals? Transactions of the Royal Society of South Australia **130**, 187-196.
142. Bice CM, Jennings PR and Zampatti BP (2007) Fish movement and recruitment in the Coorong and Lower Lakes 2006-07 Progress report. SARDI publication No. F2007/000555-1. SARDI Aquatic Sciences, West Beach SA. p. 48.
143. Potter IC, Hillard RW and Neira FJ (1986) The biology of Australian lampreys. In 'Limnology in Australia'. (Eds P De Deckker and WD Williams.) pp. 207-230. (CSIRO: Melbourne)
144. Potter IC (1996) Family Geotriidae: pouched lampreys. In 'Freshwater Fishes of South-Eastern Australia'. 2nd Edn. (Ed. RM McDowall.). (Reed Books: Chatswood NSW)
145. Morgan DL, Gill HS and Potter IC (1998) Distribution, identification and biology of freshwater fishes in south-western Australia. Records of the Western Australian Museum **Supplement 56**, 1-97.
146. Hicks DC and Hammer M (2004) Investigation of the impact of barriers on indigenous fish in the River Torrens Catchment: Literature Review. Report to the Torrens Catchment Water Management Board. Australian Water Quality Centre, Adelaide.
147. Roughly TC (1961) 'Fish and Fisheries of Australia.' First published 1951. Revised and reprinted 1953, 1955, 1957, 1961 Edn. (Angas and Robertson PTY LTD: Sydney)
148. Potter IC (1980) Ecology of larval and metamorphosing lampreys. Canadian Journal of Fisheries and Aquatic Sciences **37**, 1641-1657.
149. Savadamuthu K (2002) Impacts of farm dams on streamflow in the upper Marne Catchment. Department of Water, Land and Biodiversity Conservation, Adelaide. p. 34.

150. Savadamuthu K (2003) Surface Water Assessment of the Upper Finnis Catchment. Department of Water, Land and Biodiversity Conservation, Adelaide. p. 67.
151. Jennings PR, Zampatti BP and Bice CM (2008) Fish movement and recruitment in the Coorong and Lower Lakes: 2008/08 progress report. SARDI publication number F2007/0005552. SARDI Aquatic Sciences, Adelaide. p. 41.
152. Waite ER (1923) 'The Fishes of South Australia.' (Government Printer: Adelaide)
153. Scott TD (1962) 'The Marine and Freshwater Fishes of South Australia.' (Government Printer: Adelaide)
154. Geddes M and Wedderburn SD (2007) Fish monitoring below tidal barrages in Boundary Creek and Mundoo Channel during freshwater inflow to the River Murray estuary in 2005 and 2006. The University of Adelaide, Adelaide. p. 29.
155. SARDI Aquatic Sciences (unpublished data) SA Fisheries Statistics and data from Inland Waters research projects supplied 2006.
156. Musyl MK and Keenan CP (1996) Evidence for cryptic speciation in Australian freshwater eel-tailed catfish, *Tandanus tandanus* (Teleostei: Plotosidae). *Copeia* **1996**, 526-534.
157. Jerry DR and Woodland DJ (1997) Electrophoretic evidence for the presence of the undescribed 'Bellinger' catfish (*Tandanus* sp.) (Teleostei: Plotosidae) in four New South Wales mid-northern coastal rivers. *Marine And Freshwater Research* **48**, 235-240.
158. Hammer M (2004) NFA(SA) 2004 Fishing Competition (Catch and release), February 7th-9th @ Blanchetown, River Murray. Native Fish Australia (SA) Inc., Adelaide. p. 2.
159. Rowntree J and Hammer M (2007) Assessment of fishes, aquatic habitat and potential threats at the proposed location of the Wellington Weir, South Australia. Report to Department for Environment and Heritage, South Australian Government. Aquasave Consultants, Adelaide. p. 27.
160. Zampatti B, Leigh S and Nicol J (2008) Chowilla Icon Site fish assemblage condition monitoring 2005-2008. SARDI Aquatic Sciences Publication Number: F2008/000907-01. SARDI Aquatic Sciences, Adelaide. p. 38.
161. Clunie P and Koehn J (2000) Freshwater Catfish: a Recovery Plan. Draft Interim Final Report for Natural Resource Management Strategy Project R7002 to the Murray Darling Basin Commission. Arthur Rylah Institute for Environmental Research, Heidelberg, Victoria. p. 41.
162. Reynolds LF (1983) Migration patterns of five fish species in the Murray-Darling River system. *Australian Journal of Marine and Freshwater Research* **34**, 857-871.
163. Reynolds LF (1976) Inland fisheries. In 'SAFIC'. pp. 3-6, 15.
164. Clunie P and Koehn J (2001) Freshwater Catfish: a Recovery Plan. Final report for Natural Resource Management Strategy Project R7002 to the Murray-Darling Basin Commission. Arthur Rylah Institute for Environmental Research, Heidelberg, Victoria. p. 41.
165. Rohan G (1988) River fishery (South Australia) -review of management arrangements. In 'Workshop on Native Fish Management'. Canberra. (Murray Darling Basin Commission.)
166. Hallam ND and Thurgate ME (1992) The Biology of Ewens and Piccaninnie Ponds and Woolwash, Blacks and Gouldens Holes, South Australia. Monash University, Clayton, Victoria. p. 79.
167. McDowall RM (1996) Family Prototroctidae: southern graylings. In 'Freshwater Fishes of South-eastern Australia'. 2nd Edn. (Ed. RM McDowall.) pp. 96-98. (Reed Books: Chatswood NSW)
168. Ault TR and White RWG (1994) Effects of habitat structure and the presence of brown trout on the population density of *Galaxias truttaceus* in Tasmania, Australia. *Transactions of the American Fisheries Society* **123**, 939-949.
169. Hammer M (2008) Pilot fish movement study in Lower South East, South Australia. Report to Department for Environment and Heritage, South Australian Government. Aquasave Consultants, Adelaide. p. 28.

170. Sanger AC (1986) The evolution and ecology of the *Gadopsis marmoratus* complex. PhD thesis, University of Melbourne.
171. Ryan S (2000) A genetic and taxonomic study of the freshwater blackfish (*Gadopsis*) of mainland south-eastern Australia. B. Sc. (Honours) thesis, Deakin University.
172. Zietz AH (1902) List of the edible fish of the lower Murray. Transactions and Proceedings of the Royal Society of South Australia **26**, 265-267.
173. Hammer M (2007) Status report on South Australian threatened freshwater fish populations during 2007 drought conditions. Report to Department for Environment and Heritage, South Australian Government. Aquasave Consultants, Adelaide. p. 20.
174. Khan MT, Khan TA and Wilson ME (2004) Habitat use and movement of river blackfish (*Gadopsis marmoratus* R.) in a highly modified Victorian stream, Australia. Ecology of Freshwater Fish **13**, 285-293.
175. Jackson PD (1978) Spawning and early development of the river blackfish, *Gadopsis marmoratus* Richardson (Gadopsiformes: Gadopsidae), in the McKenzie River, Victoria. Australian Journal of Marine and Freshwater Research **29**, 293-298.
176. Sim T, Potts L, Hammer M and Doube J (2000) Fishes. In 'Natural History of Strathalbyn and Goolwa Districts'. pp. 97-108. (Douglas Press: Woodville North, South Australia.)
177. Marne River Environmental Flows Technical Panel (2003) Environmental Water Requirements of the Ephemeral Marne River System, South Australia. River Murray Catchment Water Management Board, Berri. p. 114.
178. Hall A, Higham J, Hammer M, Bice C, and Zampatti B (2009). DRAFT - Drought Action Plan for South Australian Murray-Darling Basin threatened freshwater fish populations. South Australian Department for Environment and Heritage, Adelaide.
179. Hammer M (2006 in review) Review of monitoring data for river blackfish in the Eastern Mount Lofty Ranges, South Australia: 2002-2006. Confidential technical report to the South Australian Murray-Darling Basin Natural Resources Management Board. Aquasave Consultants, Adelaide. p. 31.
180. Pierce B (1990) Murray cod invade South Australia's Cooper Creek. In 'SaFish'. pp. 11.
181. Smith B, Vilizzi L and Conallin A (2007) Analysis of the combined 'fish' dataset from the 2004-2007 South Australian River Murray baseline surveys. SARDI Publication no. F2007/000526-1. SARDI Aquatic Sciences, Adelaide. p. 47.
182. Ye Q, Jones KG and Pierce BE (2000) Murray Cod (*Maccullochella peelii peelii*): Fisheries Assessment Report to PIRSA for the Inland Waters Fishery Management Committee. South Australian Research and Development Institute, 2000/17, Adelaide.
183. Anderson JR, Morison AK and Ray DJ (1992) Age and growth of Murray cod, *Maccullochella peelii* (Perciformes: Percichthyidae), in the lower Murray-Darling Basin, Australia, from thin-sectioned otoliths. Australian Journal of Marine and Freshwater Research **43**, 983-1013.
184. Pierce BE (1994) Of mega-cod and moratoriums. In 'Southern Fisheries'. pp. 31.
185. Walker KF and Thoms MC (1993) Environmental effects of flow regulation on the River Murray, South Australia. Regulated Rivers: Research and Management **8**, 103-119.
186. Maheshwari BL, Walker KF and McMahon (1995) Effect of regulation on the flow regime of the River Murray, Australia. Regulated Rivers: Research and Management **10**, 15-38.
187. Ye Q and Zampatti B (2007) Murray cod stock status: the Lower River Murray, South Australia. Stock Status Report to PIRSA Fisheries. SARDI Publication Number F2007-000211-1. South Australian Research and Development Institute (Aquatic Sciences), Adelaide. p. 32.
188. Gillanders BM and Kingsford MJ (2002) Impact of changes in flow of freshwater on estuarine and open coastal habitats and the associated organisms. Oceanography and Marine Biology. An Annual Review **40**, 233-309.
189. Knight MA, Tosolo A and Doonan AM (2004) South Australian Fisheries and Aquaculture

- Information Statistics Report. SARDI Research Report Series, No. 60. SARID Aquatic Sciences, Adelaide.
190. Eckert J and Robinson RD (1990) The fishes of the Coorong. *South Australian Naturalist* **65**, 4-31.
 191. McCarraher DB and McKenzie JA (1986) Observations on the distribution, growth, spawning and diet of Estuary Perch (*Macquaria colonorum*) in Victorian waters. Technical Report No. 42. Arthur Rylah Institute for Environmental Research, Heidelberg, Victoria.
 192. Llewellyn LC (1974) Spawning, development and distribution of the southern pigmy perch *Nannoperca australis australis* Günther from inland waters in eastern Australia. *Australian Journal of Marine and Freshwater Research* **25**, 121-149.
 193. Morgan DL, Gill HS, Maddern MG and Beatty SJ (2004) Distribution and impacts of introduced freshwater fishes in Western Australia. *New Zealand Journal of Marine and Freshwater Research* **38**, 511-523.
 194. Arthington AH (1996) Recovery plan for the oxleyan pygmy perch *Nannoperca oxleyana*. Centre for Catchment and In-Stream Research, Griffith University, Queensland.
 195. Hammer M (2002) Freshwater Fish Snapshot: Inman River Catchment Stock Exclusion Demonstration Site. Report to the Environmental Protection Authority, Adelaide. p. 5.
 196. Merrick JR (1996) Freshwater grunters or perches. In 'Freshwater fishes of south-eastern Australia'. (Ed. RM McDowall.) pp. 164-167. (Reed Books: Chatswood, NSW)
 197. Mallen-Cooper M (1994) How high can a fish jump?: Fish need help swimming upstream. *New Scientist* **142**, 32-38.
 198. Gehrke PC and Harris JH (2000) Large-scale patterns in species richness and composition of temperate riverine fish communities, south-eastern Australia. *Marine and Freshwater Research* **51**, 165-182.
 199. Clunie P and Koehn J (2001) Silver Perch: a Recovery Plan. Final report for project R8002 to Murray-Darling Basin Commission: Canberra. Department of Natural Resources and Environment, Heidelberg. p. 41.
 200. Hammer M (2006) Review and 2005 performance of fish indicators for Environmental Water Requirements of the Marne River Catchment, South Australia. Report to SAMDB NRM Board. Aquasave Consultants, Adelaide. p. 30.
 201. Hammer M and Butler G (2000) Data sheet: freshwater fishes of the Mount Lofty Ranges, part A, South Australian Gulf Division. Upper River Torrens Landcare Group Inc, Mount Pleasant, South Australia. p. 8.
 202. Beck RG (1985) Field observations upon the dwarf galaxiid *Galaxiella pusilla* (Mack) (Pisces: Galaxiidae) in the south-east of South Australia, Australia. *South Australian Naturalist* **60**, 12-22.
 203. Nevill J (2001) 'Freshwater Biodiversity: Protecting Freshwater Ecosystems in the Face of Infrastructure Development.' (Water Research Foundation of Australia)
 204. Department for Environment and Heritage and Department for Water Land and Biodiversity Conservation (2003) Wetland strategy for South Australia. Department for Environment and Heritage, Adelaide. p. 97.
 205. Bachmann M (2002) Silky Tea-tree and Cutting Grass Wetland Rehabilitation Project Summary 1999-2002. Nature Conservation Society of South Australia, Adelaide. p. 176.
 206. Unmack P (2005) Historical biogeography and a priori hypotheses based on freshwater fishes. PhD thesis, Arizona State University.
 207. Glover CJM and Sim TC (1978) Studies on central Australian fish: a progress report. *South Australian Naturalist* **52**, 35-44.
 208. Glover CJM (1988) Central Australian Fish. South Australian Museum Information Centre, Adelaide. p. 4.

209. Pusey B, Kennard M and Arthington A (2004) 'Freshwater Fishes of North-Eastern Queensland.' (CSIRO Publishing: Collingwood, Vic.)
210. Hammer M (2006) Review of fishes of the Onkaparinga Estuary, South Australia. Aquasave, Adelaide. p. 9.
211. Ye Q, Fleer D and Jones KG (2000) Lake George Fishery Assessment Report. SARDI Aquatic Sciences, Adelaide. p. 23.
212. Honan JA and Mitchell BD (1995) Growth of the large freshwater crayfish *Euastacus bispinosus* Clark (Decapoda: Parastacidae). *Freshwater Crayfish* **10**, 118-131.
213. Waite ER (1924) Illustrations of and notes on some Australian fishes. *Records of the South Australian Museum* **11**, 479-487.
214. Piddington RW (1964) A preliminary investigation of the biology of the fish, congolli, *Pseudaphritis bursinus*. B.Sc. (Honours) thesis, University of Adelaide.
215. Cheshire K (2005) Using otolith chemistry to track the movements of a diadromous fish: the congolli *Pseudaphritis urvilli* (Teleostei: Pseudaphritidae). University of Adelaide.
216. Allen GR and Feinberg MN (1998) Descriptions of a new genus and four new species of freshwater catfishes (Plotosidae) from Australia. *Aqua* **3**, 9-18.
217. Allen GR, Midgley SH and Allen M (2002) 'Field Guide to the Freshwater Fishes of Australia.' (Western Australian Museum: Perth)
218. Larson HK (1995) A review of the Australian endemic gobiid fish genus *Chlamydogobius*, with description of five new species. *The Beagle, Records of the Museum and Arts Gallery of the Northern Territory* **12**, 19-15.
219. Ivantsoff W and Glover CJM (1974) *Craterocephalus dalhousiensis* n.sp., a sexually dimorphic teleost (Atherinidae) from South Australia. *Australian Zoologist* **18**, 88-98.
220. Crowley LELM (1990) A second hardyhead, *Craterocephalus gloveri* (Pisces: Atherinidae), from Dalhousie Springs, central Australia. *Ichthyological Exploration of Freshwaters* **1**, 113-122.
221. Kodric-Brown A and Brown JH (1993) Incomplete data sets in community ecology and biogeography: a cautionary tale. *Ecological Applications* **4**, 736-742.
222. Kodric-Brown A, Wilcox C, Bragg JG and Brown JH (2007) Dynamics of fish in Australian desert springs: role of large-mammal disturbance. *Diversity and Distributions* **13**, 789-798.
223. Beumer JP (1996) Freshwater Eels. In 'Freshwater Fishes of South-Eastern Australia'. (Ed. RM McDowall.). (Reed Books: Chatswood NSW)
224. Gooley GJ, McKinnon LJ, Ingram BA, Larkin B, Collins RO and deSilva SS (1999) Assessment of juvenile eel resources in south eastern Australia and associated development of intensive eel farming for local production. FRDC Project No 94/067. MAFRI, Victoria.
225. Bye JAT (1983) Physical oceanography. In 'Natural History of the South East'. (Eds M Tyler, CR Twidale, JK Ling and JW Holmes.) pp. 75-84. (Royal Society of South Australia Inc.: Adelaide)
226. Kelly DJ and Jellyman DJ (2007) Changes in trophic linkages to shortfin eels (*Anguilla australis*) since the collapse of submerged macrophytes in Lake Ellesmere, New Zealand. *Hydrobiologia* **579**, 161-173.
227. Ye Q, Higham J and Johnson J (2002) Murray Barrage Fishway Assessment program. Annual report for the Murray Darling Basin Commission. SARDI Aquatic Sciences., Adelaide. p. 57.
228. Langdon SA and Collins AL (2000) Quantification of the maximal swimming performance of Australasian glass eels, *Anguilla australis* and *Anguilla reinhardtii*, using a hydraulic flume swimming chamber. *New Zealand Journal of Marine and Freshwater Research* **34**, 629-636.
229. Lake JS (1971) 'Freshwater Fishes and Rivers of Australia.' (Thomas Nelson: Melbourne)
230. McNeil D, Reid D, Schmarr D and Westergaard S (2008) Preliminary fish survey for the Lake Eyre Basin Rivers Assessment: testing the fish trajectory model in South Australia. SARDI Aquatic Sciences Publication Number: F2008/00844-1. SARDI Aquatic Sciences, Adelaide. p. 90.

231. Crowley LELM (1990) Biogeography of the endemic freshwater fish *Craterocephalus* (family Atherinidae). *Memoirs of the Queensland Museum* **28**, 89-98.
232. Unmack P (1996) The unique Cooper Creek catfish from central Australia. *Fishes of Sahul* **10**, 460-464.
233. SKM (2002) Determination of environmental water requirements of the Onkaparinga River Catchment, technical report V: fish survey. Sinclair Knight Merz PTY Limited, Armadale, Victoria. p. 17.
234. O'Conner WG and Koehn JD (1998) Spawning of the broad-finned galaxias, *Galaxias brevipinnis* Gunther (Pisces: Galaxiidae) in coastal streams of southeastern Australia. *Ecology of Freshwater Fish* **7**, 95-100.
235. Ye Q (2004) Golden perch (*Macquaria ambigua*). Fishery assessment report to PIRSA Fisheries. SARDI Aquatic Sciences Publication No. RD04/0167. SARDI Aquatic Sciences, Adelaide. p. 75.
236. MDBA (2003) Native Fish Strategy for the Murray-Darling Basin 2003-2013. MDBA Publication No. 25/04. Murray Darling Basin Commission, Canberra. p. 50.
237. Drew MM (2008) A guide to the management of native fish: Victorian coastal rivers and wetlands. Department of Sustainability and Environment, Melbourne. p. 224.
238. Poff NE, Allan JD, Bain MB, Karr JR, Prestegard KL, Richter BD, Sparks RE and Stromberg JC (1997) The natural flow regime: a paradigm for river conservation and restoration. *BioScience* **47**, 769-784.
239. Bunn SE and Arthington AH (2002) Basic principles and ecological consequences of altered flow regimes for aquatic biodiversity. *Environmental Management* **30**, 492-507.
240. Gehrke PC, Brown P, Schiller CB, Moffatt DB and Bruce A (1995) River regulation and fish communities in the Murray-Darling River System, Australia. *Regulated Rivers: Research and Management* **11**, 363-375.
241. MDBA (2006) The shared water resources of the Murray-Darling Basin. MDBA Publication 21/06. Murray Darling Basin Commission, Canberra.
242. Harding CL (2005) Wetland Inventory for the Fleurieu Peninsula, South Australia. Department of Environment and Heritage, SA, Adelaide. p. 112.
243. Robertson AI and Rowling RW (2000) Effects of livestock on riparian zone vegetation in an Australian dryland river. *Regulated Rivers: Research and Management* **16**, 527-541.
244. McDowall RM (1988) 'Diadromy in Fishes: Migrations Between Freshwater and Marine Environments.' (Croom Helm: London)
245. Napier GM, Fairweather PG and Scott AC (1998) Records of fish kills in inland waters of NSW and Queensland in relation to cotton pesticides. *Wetlands (Australia)* **17**, 60-71.
246. Jeffree RA, Twining JR and Thomson J (2001) Recovery of fish communities in the Finniss River, northern Australia, following remediation of the Rum Jungle uranium/copper mine site. *Environmental Science and Technology* **35**, 2932-2941.
247. Hammer M (2000) Barossa outrage!! Putrid water and rotting fish. In 'ANGFA News'. pp. 1,6.
248. Ross ST (1991) Mechanisms structuring stream fish assemblages: are there lessons from introduced species? *Environmental Biology of Fishes* **30**, 359-368.
249. Lintermans M (2004) Human-assisted dispersal of alien freshwater fish in Australia. *New Zealand Journal of Marine and Freshwater Research* **38**, 481-501.
250. Reid JRW and Puckridge JT (1990) Coongie Lakes. In 'Natural History of the North-East Deserts'. (Eds MJ Tyler, CR Twidale, M Davies and CB Wells.) pp. 119-131. (Royal Society of South Australia: Adelaide)
251. Walker-Symonds T and Hammer M (2005) The introduction of a local native fish, the flathead gudgeon, into Laratinga Wetland Mt Barker, South Australia. Report to the Mt Barker District Council. Native Fish Australia (SA) Inc., Adelaide. p. 10.

252. McNeil D and Wilson P (2008) The speckled livebearer (*Phalloceros caudimaculatus*). Report to PIRSA Fisheries. SARDI Aquatic Sciences Publication No. F2008/00939-1. SARDI Aquatic Sciences, Adelaide. p. 29.
253. Chong R and Whittington R (2005) A Review of Australian Ornamental Fish Import Risk Management for the Period 1999 - 2004. A Report to the National Aquatic Animal Health Technical Working Group (NAAH-TWG), Department of Primary Industries and Fisheries, Yeerongpilly and University of Sydney, Sydney. p. 106.
254. Whittington RJ and Chong RP (2007) Global trade in ornamental fish from an Australian perspective: the case for revised import risk analysis and management strategies. *Preventive Veterinary Medicine* **81**, 92-116.
255. Langdon JS and Humphrey JD (1987) Epizootic haematopoietic necrosis, a new viral disease in redfin perch, *Perca fluviatilis* L., in Australia. *Journal of Fisheries Disease* **10**, 289-297.
256. Humphrey JD and Ashburner LD (1993) Spread of the bacterial fish pathogen *A. salmonicida* after importation of infected goldfish, into Australia. *Australian Veterinary Journal*, **70**, 453-454.
257. Hughes JM, Goudkamp, K., Hurwood, D.A., Hancock, M. & Bunn, S.E. (2003) Translocation causes extinction of a local population of the glass shrimp, *Paratya australiensis*. *Conservation Biology* **17**, 1007-1012.
258. Gillanders BM, Elsdon TS and Munro AR (2006) Impacts of native fish stocking on fish within the Murray-Darling Basin. University of Adelaide, Adelaide. p. 94.
259. McDowall RM (2006) Crying wolf, crying foul, or crying shame: alien salmonids and a biodiversity crisis in the southern cool-temperate galaxioid fishes? *Reviews in Fish Biology and Fisheries* **16**, 233-422.
260. Smith B and Hammer M (2005) Mapping the current distribution of native and exotic freshwater fishes within the South Australian Murray-Darling Basin: Final Report to PIRSA Rural Solutions (RDO4/0064 + SARDI series number 119). South Australian Research and Development Institute (Aquatic Sciences), Adelaide. p. 60.
261. McDowall RM (Ed.) (1996) 'Freshwater Fishes of South-eastern Australia (2nd Edn.)' (Reed Books: Chatswood NSW)
262. Crowl TA, Townsend CR and McIntosh AR (1992) The impact of introduced brown and rainbow trout on native fish: the case of Australasia. *Reviews in Fish Biology and Fisheries* **2**, 217-241.
263. Koster WM, Raadik TA and Clunie P (2002) Scoping study of the potential spread and impact of the exotic fish oriental weather loach in the Murray-Darling Basin, Australia: a resource document. Arthur Rylah Institute for Environmental Research, Melbourne. p. 79.
264. Fulton W (2004) Review of trout stocking in South Australia: South Australian Fisheries Management Series No. 41. Primary Industries and Resources SA, Adelaide. p. 67.
265. Morrissy NM (1967) The ecology of trout in South Australia. PhD thesis, University of Adelaide.
266. Morgan DL, Hambleton SJ, Gill HS and Beatty S (2002) Distribution, biology and likely impacts of the introduced redfin perch (*Perca fluviatilis*) (Percidae) in Western Australia. *Marine and Freshwater Research* **53**, 1211-1221.
267. Hammer M (2006) Review of monitoring data for river blackfish in the Eastern Mount Lofty Ranges, South Australia: 2002-2006. Report to the South Australian Murray-Darling Basin Natural Resources Management Board. Aquasave Consultants, Adelaide. p. 32.
268. McInnes KL, Suppiah R, Whetton PH, Hennessy KJ and Jones RN (2003) Climate change in South Australia. Report on: assessment of climate change, impacts and possible adaptation strategies relevant to South Australia. Undertaken for the South Australian Government by the Climate Impact Group, CSIRO Atmospheric Research, Aspendale, Victoria. p. 61.
269. Musyl MK and Keenan CP (1992) Population genetics and zoogeography of Australian freshwater golden perch, *Macquaria ambigua* (Richardson 1845) (Teleostei: Percichthyidae), and electrophoretic identification of a new species from the Lake Eyre Basin. *Australian Journal of Marine and Freshwater Research* **43**, 1585-1601.

270. Bertozzi T (1990) Morphological and biochemical variation in the western carp gudgeon *Hypseleotris klunzingeri* Ogilby from the Lower River Murray, South Australia. Honours thesis, The University of Adelaide.
271. Moritz C (1994) Defining 'evolutionary significant units' for conservation. *Trends in Ecology and Evolution* **9**, 373-375.
272. Department for Environment and Heritage (2007) Translocation of fauna in South Australia. Draft. NPWSA standard operating procedures. Department for Environment and Heritage, Adelaide. p. 6.
273. Wissmar RC and Bescheta RL (1998) Restoration and management of riparian ecosystems: a catchment perspective. *Freshwater Biology* **40**, 571-585.
274. Upper River Torrens Landcare Group Inc (2003) Watercourse management: a field guide for the Mount Lofty Ranges (Third Edition). Upper River Torrens Landcare Group, Mount Pleasant SA.
275. Sinclair Knight Merz (2003) Guidelines and protocols for the management of native fish habitat. Sinclair Knight Merz, Armadale Vic. p. 118.
276. Lovett S and Price P (2007) Principles for riparian lands management. Land & Water Australia, Canberra.
277. Department of Fisheries (2009) A five-year management strategy for the recreational trout fishery. Fisheries Management Paper No. 234. Department of Fisheries, Perth. p. 38.
278. Gehrke PC and Harris JH (2001) Regional-scale effects of flow regulation on lowland riverine fish communities in New South Wales, Australia. *Regulated Rivers: Research and Management* **17**, 369-391.
279. Closs GP and Lake PS (1996) Drought, differential mortality and the coexistence of a native and an introduced fish species in a south east Australian intermittent stream. *Environmental Biology of Fishes* **47**, 17-26.
280. Lake JS (1957) Trout populations and habitats in New South Wales. *Australian Journal of Marine and Freshwater Research* **8**, 414-450.
281. Lintermans M (2000) Recolonization by the mountain galaxias *Galaxias olidus* of a montane stream after the eradication of rainbow trout *Oncorhynchus mykiss*. *Marine and Freshwater Research* **51**, 799-804.
282. Stuart I, Williams A, McKenzie J and Holt T (2006) The Williams' cage: a key tool for carp management in Murray-Darling Basin fishways. Final report to the Murray-Darling Basin Commission. Arthur Rylah Institute for Environmental Research, Victoria. p. 31.
283. Saddler S and Raadik T (1995) Barred Galaxias Recovery Plan: protection of the barred galaxias *Galaxias fuscus* from trout by building weirs downstream of remaining populations, annual report. Department of Conservation and Natural Resources, Heidelberg.
284. Mallen-Cooper M (1999) Developing fishways for non-salmonid fishes; a case study from the Murray River in Australia. In 'Innovations in Fish Passage Technology'. (Ed. M Odeh.) pp. 173-195. (American Fisheries Society: Bethesda)
285. Stuart IG, Zampatti BP and Baumgartner LJ (2008) Can a low-gradient vertical slot fishway provide passage for a lowland river fish community. *Marine and Freshwater Research* **59**, 332-346.
286. Leigh S and Zampatti B (2005) A preliminary prioritization of barriers to fish barriers within anabranch and off-channel habitats along the River Murray SA. Report to DWLBC. SARDI Aquatic Sciences Publication RD04/0234-2. SARDI Aquatic Sciences, Adelaide. p. 49.
287. Philippart JC (1995) Is captive breeding an effective solution for the preservation of endemic species? *Biological Conservation* **72**, 281-295.
288. Hammer M and Butler G (2001) Data sheet: freshwater fishes of the Mount Lofty Ranges, part C, exotic fish. Upper River Torrens Landcare Group Inc, Mount Pleasant, South Australia. p. 4.
289. McNeil DG and Hammer M (2007) Biological review of the freshwater fishes of the Mount Lofty Ranges. SARDI publication number: F2006/000335. South Australian Research and Development Institute (Aquatic Sciences), Adelaide. p. 104.

APPENDIX 1

Freshwater fishes recorded from different Drainage Divisions in South Australia.

[x = recorded, ? unconfirmed records, * SA endemic, blue = diadromous, green = euryhaline]

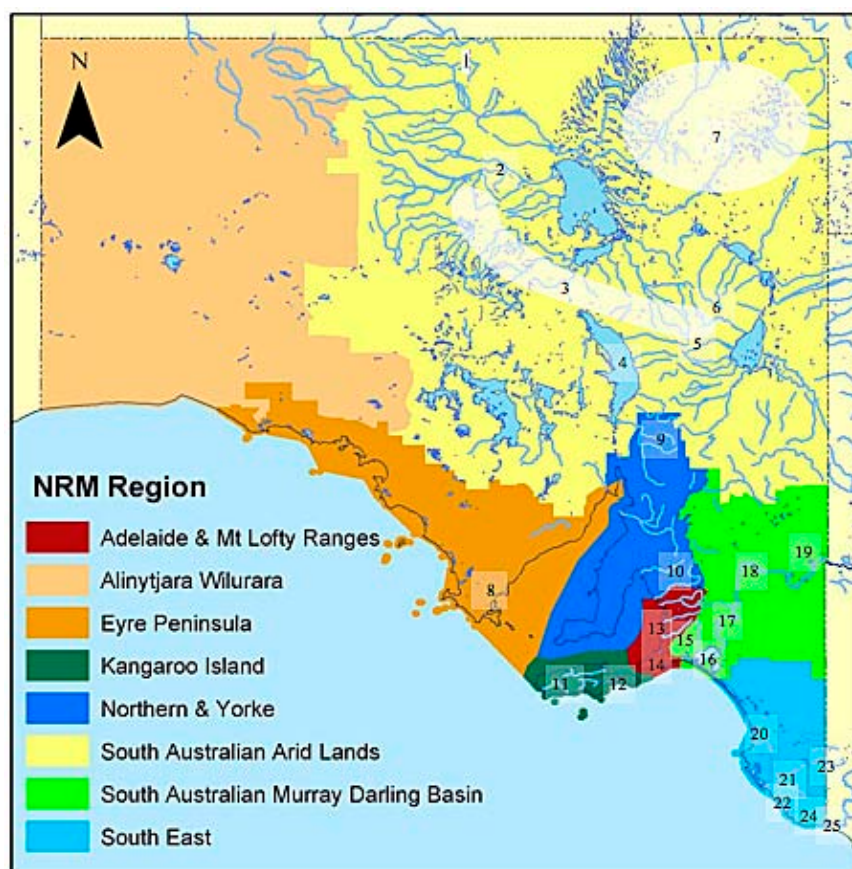
Family	Taxon	Common name	SEC	MD	SAG	LE	WP
Geotriidae	<i>Geotria australis</i>	Pouched Lamprey	x	x	x		
Mordaciidae	<i>Mordacia mordax</i>	Shortheaded Lamprey	x	x	x		
Anguillidae	<i>Anguilla australis australis</i>	Shortfinned Eel	x	x	x		
Plotosidae	<i>Neosiluroides cooperensis</i>	Cooper Catfish				x	
	<i>Neosilurus gloveri</i>	Dalhousie Catfish				x	
	<i>Neosilurus hyrtlii</i>	Hyrtl's Catfish				x	
	<i>Porochilus argenteus</i>	Silver Catfish				x	
	<i>Tandanus tandanus</i>	Freshwater Catfish		x			
Clupeidae	<i>Nematalosa erebi</i>	Bony Herring		x	?	x	
Retropinnidae	<i>Prototroctes maraena</i>	Australian Grayling	x				
	<i>Retropinna semoni</i>	Smelt	x	x		x	
Galaxiidae	<i>Galaxias brevipinnis</i>	Climbing Galaxias	x	x	x		
	<i>Galaxias maculatus</i>	Common Galaxias	x	x	x		
	<i>Galaxias olidus</i>	Mountain Galaxias	x	x	x		
	<i>Galaxias rostratus</i>	Flathead Galaxias		x			
	<i>Galaxias truttaceus</i>	Spotted Galaxias	x				
	<i>Galaxiella pusilla</i>	Dwarf Galaxias	x				
	<i>Neochanna cleaveri</i>	Australian Mudfish	x				
Melanotaeniidae	<i>Melanotaenia fluviatilis</i>	Murray Rainbowfish	?	x			
	<i>Melanotaenia splendida tatei</i>	Desert Rainbowfish				x	
Atherinidae	<i>Atherinosoma microstoma</i>	Smallmouthed Hardyhead	x	x	x		x
	<i>Craterocephalus dalhousiensis</i>	Dalhousie Hardyhead				*	
	<i>Craterocephalus eyresii</i>	Lake Eyre Hardyhead			*	*	?
	<i>Craterocephalus fluviatilis</i>	Murray Hardyhead		x			
	<i>Craterocephalus gloveri</i>	Glover's Hardyhead				*	
	<i>Craterocephalus stercusmuscarum fulvus</i>	Unspecked Hardyhead		x			
	<i>Craterocephalus stercusmuscarum stercusmuscarum</i>	Flyspecked Hardyhead				x	
Ambassidae	<i>Ambassis agassizii</i>	Agassiz's Glassfish		x			
	<i>Ambassis</i> sp.	Northwest Glassfish				x	
Percichthyidae	<i>Gadopsis marmoratus</i>	River Blackfish	x	x	x		

Appendix 1 continued....

Family	Taxon	Common name	SEC	MD	SAG	LE	WP
	<i>Maccullochella macquariensis</i>	Trout Cod		x			
	<i>Maccullochella peelii peelii</i>	Murray Cod		x			
	<i>Macquaria ambigua ambigua</i>	Murray-Darling Golden Perch		x			
	<i>Macquaria australasica</i>	Macquarie Perch		x			
	<i>Macquaria colonorum</i>	Estuary Perch	x	x			
	<i>Macquaria</i> sp.	Lake Eyre Golden Perch				x	
	<i>Nannoperca australis</i>	Southern Pygmy Perch	x	x	x		
	<i>Nannoperca obscura</i>	Yarra Pygmy Perch	x	x			
	<i>Nannoperca variegata</i>	Variegated Pygmy Perch	x				
Terapontidae	<i>Amniataba percoides</i>	Banded Grunter				x	
	<i>Bidyanus bidyanus</i>	Silver Perch		x			
	<i>Bidyanus welchi</i>	Welch's Grunter				x	
	<i>Leiopotherapon unicolor</i>	Spangled Grunter		x	?	x	?
	<i>Scortum barcoo</i>	Barcoo Grunter				x	
Pseudaphritidae	<i>Pseudaphritis urvillii</i>	Congolli	x	x	x		x
Eleotridae	<i>Hypseleotris klunzingeri</i>	Western Carp Gudgeon		x		x	
Eleotridae	<i>Hypseleotris klunzingeri</i>	Western Carp Gudgeon		x		x	
	<i>Hypseleotris</i> sp. 1	Midgley's Carp Gudgeon		x		x	
	<i>Hypseleotris</i> sp. 3	Murray Darling Carp Gudgeon		x	x		
	<i>Hypseleotris</i> spp.	Hybrid forms (e.g. Lake's Carp Gudgeon)	x		x		
	<i>Mogurnda adspersa</i>	Southern Purple-spotted Gudgeon		x	x		
	<i>Mogurnda clivicola</i>	Flinders Ranges Purple-spotted Gudgeon		x			
	<i>Mogurnda thermophila</i>	Dalhousie Purple-spotted Gudgeon			*		
	<i>Philypnodon grandiceps</i>	Flathead Gudgeon	x	x	x		
	<i>Philypnodon macrostomus</i>	Dwarf Flathead Gudgeon		x	x		
Gobiidae	<i>Chlamydogobius eremius</i>	Desert Goby				*	
	<i>Chlamydogobius gloveri</i>	Dalhousie Goby				*	
	<i>Pseudogobius olorum</i>	Western Bluespot Goby	x	x	x		x
	<i>Tasmanogobius lasti</i>	Lagoon Goby	x	x	x		
Totals		58	21	35	17	23	3

APPENDIX 2

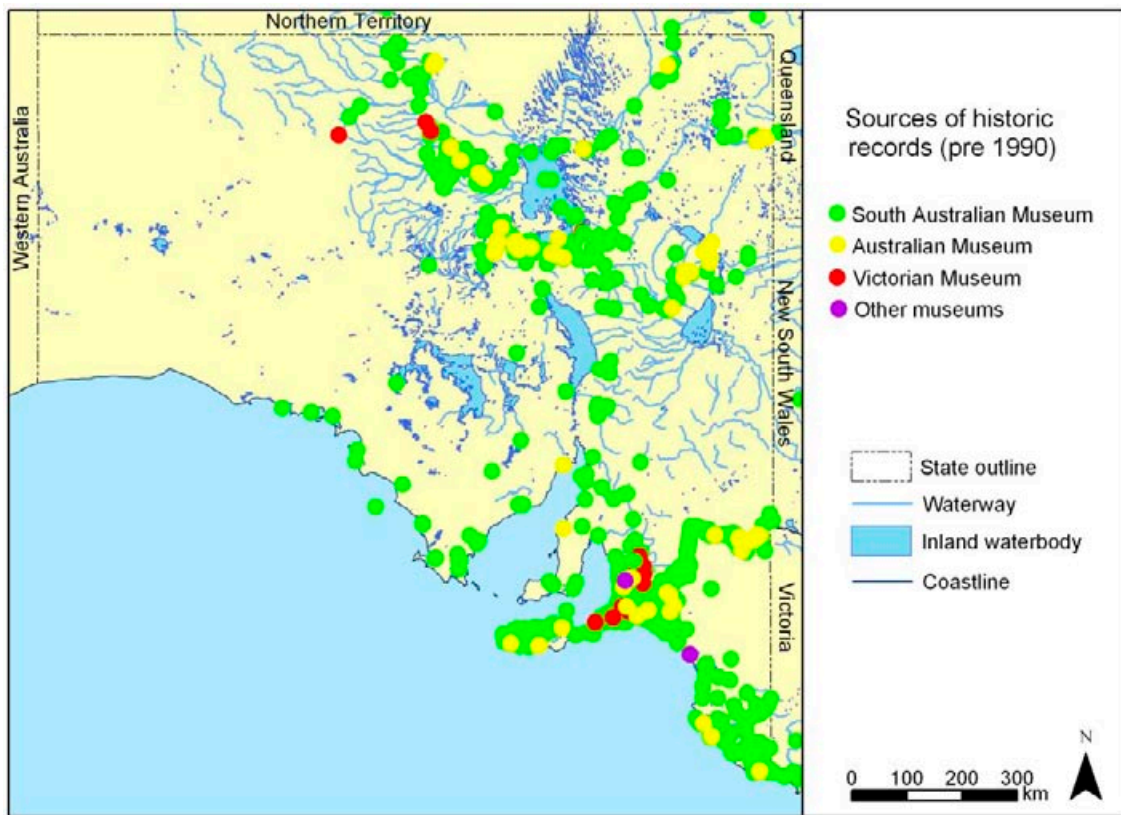
Management jurisdictions and important fish habitats in South Australia



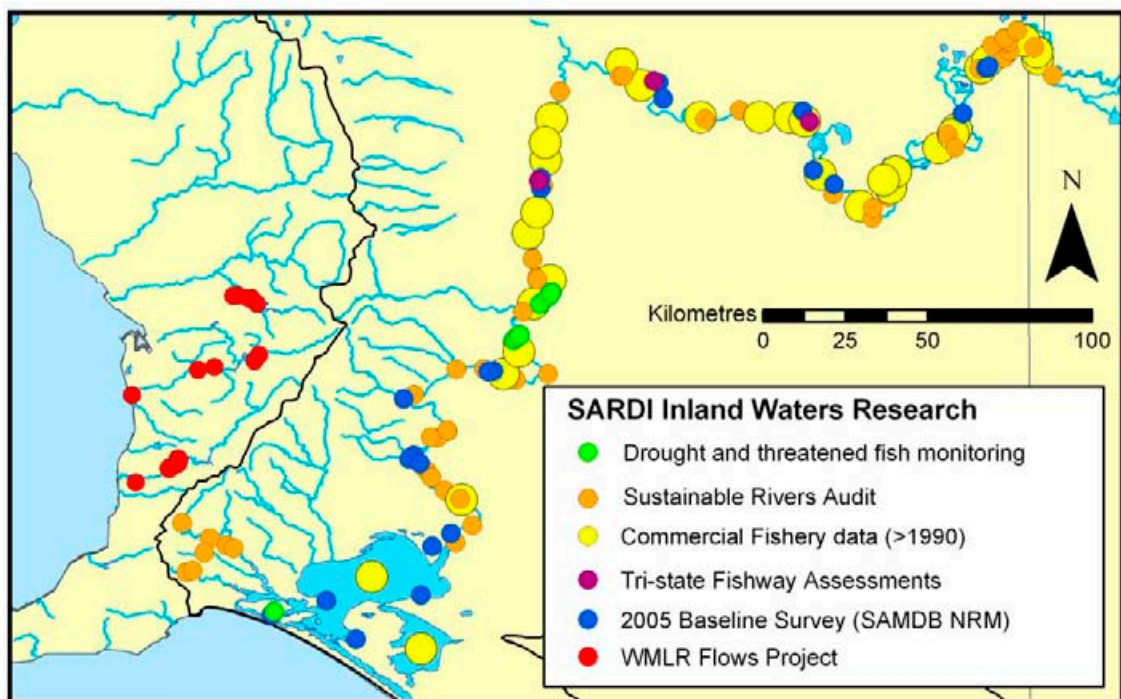
South Australian Arid Lands		Adelaide & Mt Lofty Ranges	
1	Dalhousie Springs	13	Streams (Gawler to Hindmarsh catchments)
2	Neales River	14	Southern Fleurieu Swamps
3	GAB mound springs	South Australian MDB	
4	Lake Torrens and fringing springs	15	Eastern Mount Lofty Ranges (Currency, to Marne catchments)
5	Balcanoona Creek	16	Lakes Alexandrina and Albert & the Coorong
6	MacDonnell Creek	17	River Murray wetlands (Blanchetown-Wellington)
7	Coopers Ck, Coongie Lakes and Warburton River	18	River Murray channel
Eyre Peninsula		19	Chowilla region, Berrí and Disher Ck wetlands
8	Tod River	South East	
Northern and Yorke		20	West Avenue watercourse (Henry Creek)
9	Willochera Creek	21	Mt Burr swamps
10	Broughton River	22	Lake Bonney area & Millicent drains
Kangaroo Island		23	Mosquito Creek and Bool Lagoon
11	Western streams (Middle, Western, Rocky, Stunsail, Harriet)	24	Lower SE rising springs (Ewens, Stratmans, Piccaninnie)
12	Willson River	25	Glenelg River (SA)

APPENDIX 3

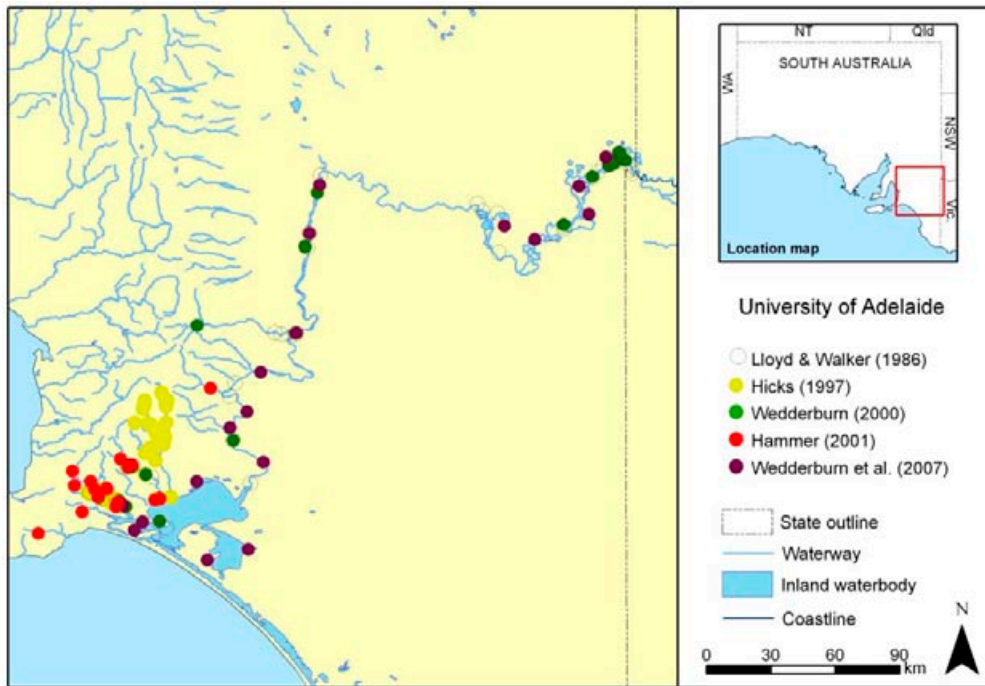
Management jurisdictions and important fish habitats in South Australia



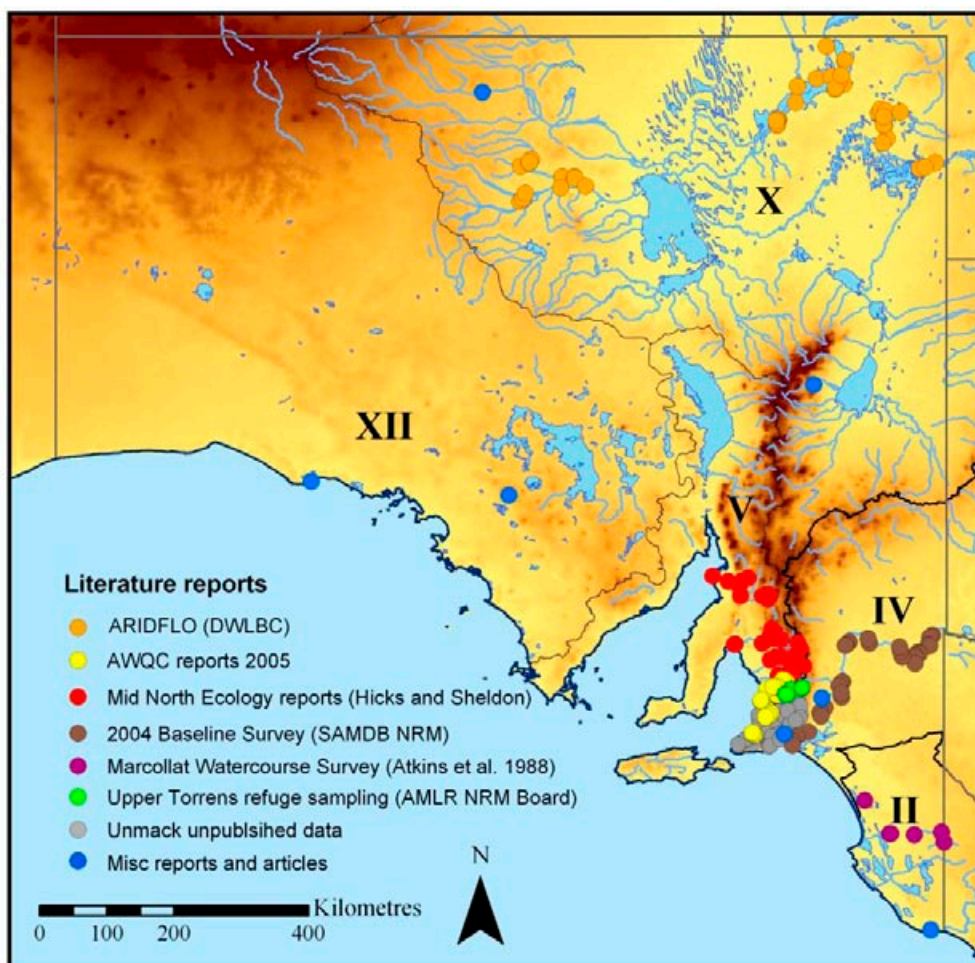
Museum records



Available SARDI Aquatic Sciences Research records 2001-2006



University of Adelaide studies



Miscellaneous research records for South Australia

APPENDIX 4

Conservation criteria used to assess the Status of Taxa in South Australia³⁸

IMPORTANT NOTE: It is imperative that, when assessing species schedules for South Australia, the following considerations are made:

When assessing the status of taxa in SA, populations' external to this state must largely be ignored as the focus is on conserving taxa within this state.

Taxa may be classed as 'Rare' in South Australia if they meet one of the following criteria (a. to d.) and do not meet the 'IUCN' criteria for 'Critically Endangered', 'Endangered' or 'Vulnerable'.

The definitions for the majority of terms used in the 'Rare' criteria are consistent with 'IUCN' definitions.

It is intended that the 'Rare' category for South Australia includes taxa that are in decline (but do not meet IUCN criteria) as well taxa that naturally have a limited presence (in terms of range or numbers etc) in this state.

Proposed ratings for taxa should be clearly justified by annotating with the assigned criteria.

It is highly recommended that, before commencing any assessment, all the information accompanying the 'IUCN' criteria be read (refer to website : http://www.redlist.org/info/categories_criteria.html)

Species that are considered 'Extinct' or 'Critically Endangered' using the IUCN criteria are currently listed as 'Endangered' on the SA schedules.

IUCN 2001 Criteria⁶ used for Critically Endangered, Endangered and Vulnerable. Rare category developed for South Australia by the 'Threatened Species Schedule Subcommittee' in February 2002. IUCN criteria (2001) also applies for Extinct (EX): no reasonable doubt that the last individual has died, following exhaustive surveys, and Extinct in the Wild (EW): taxon is known to survive in captivity or as naturalised population(s) outside of historic range.

CRITICALLY ENDANGERED (CR)

A taxon is Critically Endangered when the best available evidence indicates that it meets any of the following criteria (A to E), and it is therefore considered to be facing an extremely high risk of extinction in the wild:

A. Reduction in population size based on any of the following:

1. An observed, estimated, inferred or suspected population size reduction of $\geq 90\%$ over the last 10 years or three generations, whichever is the longer, where the causes of the reduction are clearly reversible AND understood AND ceased, based on (and specifying) any of the following:
 - (a) direct observation
 - (b) an index of abundance appropriate to the taxon
 - (c) a decline in area of occupancy, extent of occurrence and/or quality of habitat
 - (d) actual or potential levels of exploitation
 - (e) the effects of introduced taxa, hybridization, pathogens, pollutants, competitors or parasites.
2. An observed, estimated, inferred or suspected population size reduction of $\geq 80\%$ over the last 10 years or three generations, whichever is the longer, where the reduction or its causes may not have ceased OR may not be understood OR may not be reversible, based on (and specifying) any of (a) to (e) under A1.
3. A population size reduction of $\geq 80\%$, projected or suspected to be met within the next 10 years or three generations, whichever is the longer (up to a maximum of 100 years), based on (and specifying) any of (b) to (e) under A1.
4. An observed, estimated, inferred, projected or suspected population size reduction of $\geq 80\%$ over any 10 year or three generation period, whichever is longer (up to a maximum of 100 years), where the time period includes both the past and the future, and where the reduction or its causes may not have ceased OR may not be understood OR may not be reversible, based on (and specifying) any of (a) to (e) under A1.

B. Geographic range in the form of either B1 (extent of occurrence) OR B2 (area of occupancy) OR both:

1. Extent of occurrence estimated to be less than 100 km², and estimates indicating at least two of a-c:
 - a. Severely fragmented or known to exist at only a single location.
 - b. Continuing decline, observed, inferred or projected, in any of the following:
 - (i) extent of occurrence
 - (ii) area of occupancy
 - (iii) area, extent and/or quality of habitat
 - (iv) number of locations or subpopulations
 - (v) number of mature individuals.
 - c. Extreme fluctuations in any of the following:
 - (i) extent of occurrence
 - (ii) area of occupancy
 - (iii) number of locations or subpopulations
 - (iv) number of mature individuals.

2. Area of occupancy estimated to be less than 10 km², and estimates indicating at least two of a-c:
 - a. Severely fragmented or known to exist at only a single location.
 - b. Continuing decline, observed, inferred or projected, in any of the following:
 - (i) extent of occurrence
 - (ii) area of occupancy
 - (iii) area, extent and/or quality of habitat
 - (iv) number of locations or subpopulations
 - (v) number of mature individuals.
 - c. Extreme fluctuations in any of the following:
 - (i) extent of occurrence
 - (ii) area of occupancy
 - (iii) number of locations or subpopulations
 - (iv) number of mature individuals.

C. Population size estimated to number fewer than 250 mature individuals and either:

1. An estimated continuing decline of at least 25% within three years or one generation, whichever is longer, (up to a maximum of 100 years in the future) OR
2. A continuing decline, observed, projected, or inferred, in numbers of mature individuals AND at least one of the following (a-b):
 - (a) Population structure in the form of one of the following:
 - (i) no subpopulation estimated to contain more than 50 mature individuals, OR
 - (ii) at least 90% of mature individuals in one subpopulation.
 - (b) Extreme fluctuations in number of mature individuals.

D. Population size estimated to number fewer than 50 mature individuals.

E. Quantitative analysis showing the probability of extinction in the wild is at least 50% within 10 years or three generations, whichever is the longer (up to a maximum of 100 years).

ENDANGERED (EN)

A taxon is Endangered when the best available evidence indicates that it meets any of the following criteria (A to E), and it is therefore considered to be facing a very high risk of extinction in the wild:

A. Reduction in population size based on any of the following:

1. An observed, estimated, inferred or suspected population size reduction of $\geq 70\%$ over the last 10 years or three generations, whichever is the longer, where the causes of the reduction are clearly reversible AND understood AND ceased, based on (and specifying) any of the following:
 - (a) direct observation
 - (b) an index of abundance appropriate to the taxon
 - (c) a decline in area of occupancy, extent of occurrence and/or quality of habitat
 - (d) actual or potential levels of exploitation
 - (e) the effects of introduced taxa, hybridization, pathogens, pollutants, competitors or parasites.
2. An observed, estimated, inferred or suspected population size reduction of $\geq 50\%$ over the last 10 years or three generations, whichever is the longer, where the reduction or its causes may not have ceased OR may not be understood OR may not be reversible, based on (and specifying) any of (a) to (e) under A1.
3. A population size reduction of $\geq 50\%$, projected or suspected to be met within the next 10 years or three generations, whichever is the longer (up to a maximum of 100 years), based on (and specifying) any of (b) to (e) under A1.
4. An observed, estimated, inferred, projected or suspected population size reduction of $\geq 50\%$ over any 10 year or three generation period, whichever is longer (up to a maximum of 100 years), where the time period includes both the past and the future, AND where the reduction or its causes may not have ceased OR may not be understood OR may not be reversible, based on (and specifying) any of (a) to (e) under A1.

B. Geographic range in the form of either B1 (extent of occurrence) OR B2 (area of occupancy) OR both:

1. Extent of occurrence estimated to be less than 5000 km², and estimates indicating at least two of a-c:
 - a. Severely fragmented or known to exist at no more than five locations.
 - b. Continuing decline, observed, inferred or projected, in any of the following:
 - (i) extent of occurrence
 - (ii) area of occupancy
 - (iii) area, extent and/or quality of habitat
 - (iv) number of locations or subpopulations
 - (v) number of mature individuals.
 - c. Extreme fluctuations in any of the following:
 - (i) extent of occurrence
 - (ii) area of occupancy
 - (iii) number of locations or subpopulations
 - (iv) number of mature individuals.

2. Area of occupancy estimated to be less than 500 km², and estimates indicating at least two of a-c:
 - a. Severely fragmented or known to exist at no more than five locations.
 - b. Continuing decline, observed, inferred or projected, in any of the following:
 - (i) extent of occurrence
 - (ii) area of occupancy
 - (iii) area, extent and/or quality of habitat
 - (iv) number of locations or subpopulations
 - (v) number of mature individuals.
 - c. Extreme fluctuations in any of the following:
 - (i) extent of occurrence
 - (ii) area of occupancy
 - (iii) number of locations or subpopulations
 - (iv) number of mature individuals.

C. Population size estimated to number fewer than 2500 mature individuals and either:

1. An estimated continuing decline of at least 20% within five years or two generations, whichever is longer, (up to a maximum of 100 years in the future) OR
2. A continuing decline, observed, projected, or inferred, in numbers of mature individuals AND at least one of the following (a-b):
 - (a) Population structure in the form of one of the following:
 - (i) no subpopulation estimated to contain more than 250 mature individuals, OR
 - (ii) at least 95% of mature individuals in one subpopulation.
 - (b) Extreme fluctuations in number of mature individuals.

D. Population size estimated to number fewer than 250 mature individuals.

E. Quantitative analysis showing the probability of extinction in the wild is at least 20% within 20 years or five generations, whichever is the longer (up to a maximum of 100 years).

VULNERABLE (VU)

A taxon is Vulnerable when the best available evidence indicates that it meets any of the following criteria (A to E), and it is therefore considered to be facing a high risk of extinction in the wild:

A. Reduction in population size based on any of the following:

1. An observed, estimated, inferred or suspected population size reduction of $\geq 50\%$ over the last 10 years or three generations, whichever is the longer, where the causes of the reduction are: clearly reversible AND understood AND ceased, based on (and specifying) any of the following:
 - (a) direct observation
 - (b) an index of abundance appropriate to the taxon
 - (c) a decline in area of occupancy, extent of occurrence and/or quality of habitat
 - (d) actual or potential levels of exploitation
 - (e) the effects of introduced taxa, hybridization, pathogens, pollutants, competitors or parasites.
2. An observed, estimated, inferred or suspected population size reduction of $\geq 30\%$ over the last 10 years or three generations, whichever is the longer, where the reduction or its causes may not have ceased OR may not be understood OR may not be reversible, based on (and specifying) any of (a) to (e) under A1.
3. A population size reduction of $\geq 30\%$, projected or suspected to be met within the next 10 years or three generations, whichever is the longer (up to a maximum of 100 years), based on (and specifying) any of (b) to (e) under A1.
4. An observed, estimated, inferred, projected or suspected population size reduction of $\geq 30\%$ over any 10 year or three generation period, whichever is longer (up to a maximum of 100 years), where the time period includes both the past and the future, AND where the reduction or its causes may not have ceased OR may not be understood OR may not be reversible, based on (and specifying) any of (a) to (e) under A1.

B. Geographic range in the form of either B1 (extent of occurrence) OR B2 (area of occupancy) OR both:

1. Extent of occurrence estimated to be less than 20,000 km², and estimates indicating at least two of a-c:
 - a. Severely fragmented or known to exist at no more than 10 locations.
 - b. Continuing decline, observed, inferred or projected, in any of the following:
 - (i) extent of occurrence
 - (ii) area of occupancy
 - (iii) area, extent and/or quality of habitat
 - (iv) number of locations or subpopulations
 - (v) number of mature individuals.
 - c. Extreme fluctuations in any of the following:
 - (i) extent of occurrence
 - (ii) area of occupancy
 - (iii) number of locations or subpopulations
 - (iv) number of mature individuals.

2. Area of occupancy estimated to be less than 2000 km², and estimates indicating at least two of a-c:
 - a. Severely fragmented or known to exist at no more than 10 locations.
 - b. Continuing decline, observed, inferred or projected, in any of the following:
 - (i) extent of occurrence
 - (ii) area of occupancy
 - (iii) area, extent and/or quality of habitat
 - (iv) number of locations or subpopulations
 - (v) number of mature individuals.
 - c. Extreme fluctuations in any of the following:
 - (i) extent of occurrence
 - (ii) area of occupancy
 - (iii) number of locations or subpopulations
 - (iv) number of mature individuals.

C. Population size estimated to number fewer than 10,000 mature individuals and either:

1. An estimated continuing decline of at least 10% within 10 years or three generations, whichever is longer, (up to a maximum of 100 years in the future) OR
2. A continuing decline, observed, projected, or inferred, in numbers of mature individuals AND at least one of the following (a-b):
 - (a) Population structure in the form of one of the following:
 - (i) no subpopulation estimated to contain more than 1000 mature individuals, OR
 - (ii) all mature individuals are in one subpopulation.
 - (b) Extreme fluctuations in number of mature individuals.

D. Population very small or restricted in the form of either of the following:

1. Population size estimated to number fewer than 1000 mature individuals.
2. Population with a very restricted area of occupancy (typically less than 20 km²) or number of locations (typically five or fewer) such that it is prone to the effects of human activities or stochastic events within a very short time period in an uncertain future, and is thus capable of becoming Critically Endangered or even Extinct in a very short time period.

E. Quantitative analysis showing the probability of extinction in the wild is at least 10% within 100 years.

RARE (RA)

Criteria:

- a. Reduced area of occupancy and/or extent of occurrence: Taxa that have disappeared from >50% of their former area of occupancy and/or extent of occurrence and it is observed, estimated, inferred or suspected that further decline is continuing.
- b. Declined in abundance: Taxa that have experienced a significant decline in abundance in >50% of their former area of occupancy and/or extent of occurrence and it is observed, estimated, inferred or suspected that further decline is continuing.
- c. Small populations: Taxa where it is observed, estimated, inferred or suspected that the total population size numbers <3000 mature individuals and specifying any of the following.
 - (i) Resident population
 - (ii) Regular visitors to the state (eg. migratory taxa)
 - (iii) Irregular visitors to the state (eg. in response to episodic rainfall events)
 - (iv) Taxa that are experiencing range extensions into SA, with data for other areas showing that they are increasing in range and abundance.
- d. Restricted extent of occurrence or area of occupancy: Taxa with either i) or ii)
 - (i) extent of occurrence <20,000 km²
 - (ii) area of occupancy <2,000 km² that is highly fragmented



ACTION PLAN FOR SOUTH AUSTRALIAN
FRESHWATER FISHES

Native Fish Australia (SA) Inc. 2009

www.nativefishsa.asn.au